

mbeal1 @ CFL-RR.com



Axle SN/LN Configuration

Axle LN 121889236 **Date of MFG** 1/28/2014 11:32 AM **Shop Order No.** 200889236-000 **Plt** 12

Model No. #10 **Engraved Model** 10H **COP Ord No** 875582 **COP Line No.** 4 **Qty** 1

Capacity 3000 **Exclusion** A **SLR** 13.3 **Order Date** 1/20/2014 **Due Date** 1/28/2014

Preconfig No 3294902 **Product Catagory** TA **CSA Axle**

Ship To 0 **Ship Via** Dexter Truck **Ship Via Code** 9

Customer Name LIVIN' LITE RV

Customer No. 128034

1025 E. WATERFORD AVENUE

Arm Angle 32DT **Tube Cut** 64.0800

Address WAKARUSA, IN
46573

SC / OB 62.25 **HF** 76.25

TW **Wired**

Bearing 1 031-031-02 **Spindle** 002-142-22

Bearing 2 031-033-02 **Spring 1**

Brake 1 023-026-00 **Spring 2**

Brake 2 023-027-00 **Spring Seat**

Hub 1 008-247-05 **Tube** 001-098-00

Hub 2 **069_1** 069-022-23

Seal PN 010-019-00 **069_2** 069-047-56

Seals **069_3** 069-047-62

UBolt **Tie Plate**

SMH 1 003-304-00 **SMH 2** 003-305-00

Shop Order Notes

HF= 76.25, RC= 3000, RUBBER LENGTH IS:
14.50, BAR LENGTH IS: 16.50, OB= 62.25, TUBE
CUT= 64.0800, CSA TAG CAPACITY = 3000

Shop Order Options

Brk Axle, 10x2 1/4, Elec, Brk, Std.Spdl, Flg-EZ
Lube, 5-4.50, H-D, 1/2-20 Stud, Galv.Cap, 32 Down
Trail, 3 High-Std (I)

Part	Supplier	Lot
001-098-00		343040

Axle Notes

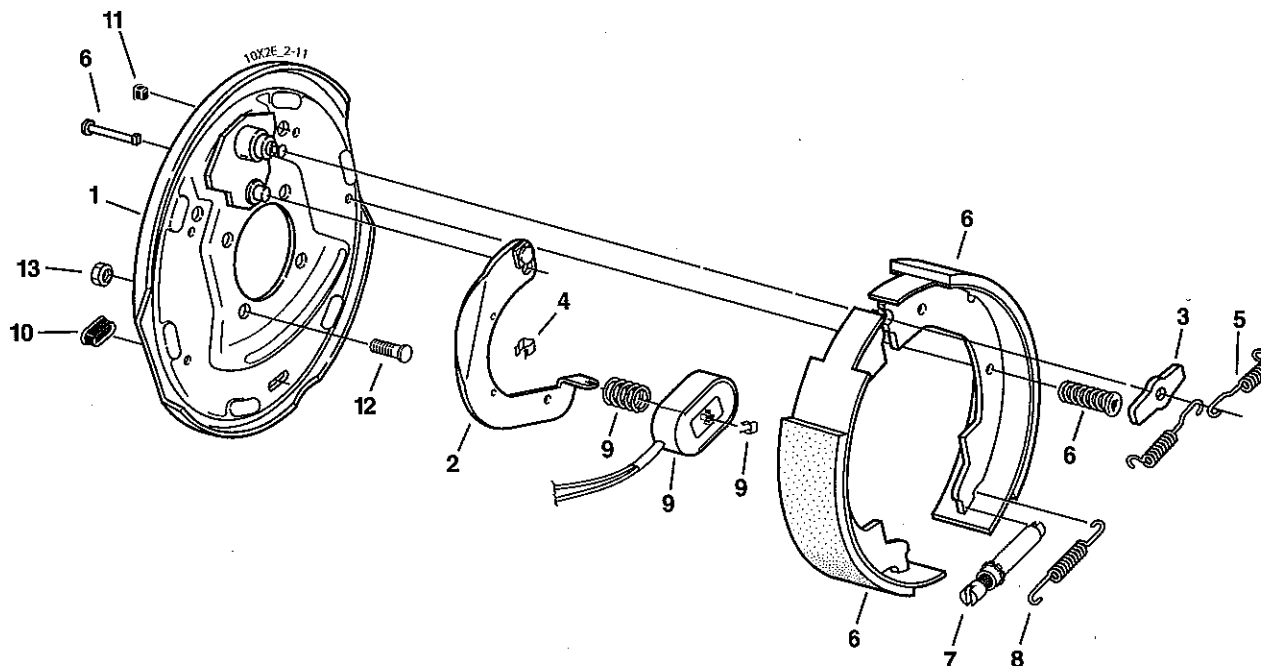
Exclusions:

10" x 2 1/4" Electric Brake



CSA approved at 3500#/13.3 SLR

2300 - 3500 LBS. CAPACITY



Electric Brake

Item	Part No.	Qty/Brk	Description
0	K23-026-00	1	LH Complete Brake Assembly (shown)
0	K23-027-00	1	RH Complete Brake Assembly
1	036-019-10	1	Backing Plate Assembly
2	047-019-05	1	LH Actuating Lever Arm
2	047-020-05	1	RH Actuating Lever Arm
3	005-067-00	1	Washer
4	027-005-00	2	Wire Clip
5	046-009-00	2	Retractor Spring
6	K71-047-00	1	Shoe & Lining Kit Contains:
		1	#040-017-00 Primary Shoe & Lining
		1	#040-021-00 Secondary Shoe & Lining
		2	#049-002-00 Shoe Hold Down Pin #8
		2	#046-077-00 Shoe Hold Down Spring & Cup
7	043-004-00	1	Adjuster Assembly
8	046-018-00	1	Adjusting Screw Spring
9	K71-104-00	1	Magnet Kit Contains:
		1	#042-140-00 Magnet (green wire)
		1	#027-009-00 Magnet Clip
		1	#046-080-00 Magnet Spring
10	046-007-00	2	Adjuster Slot Plug
11	046-016-00	1	Wire Grommet
12	007-041-00	4	Brake Mounting Bolt - Press-In
*13	006-017-00	4	Brake Mounting Nut

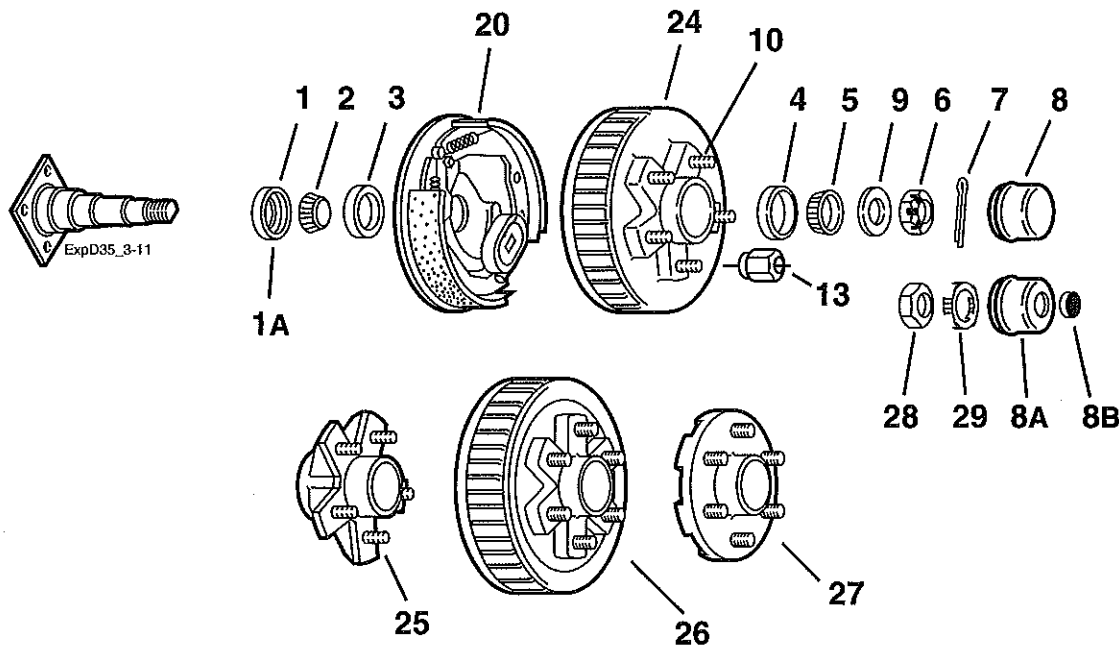
* Not included with complete brake assembly. Item sold separately.

023-216-00 w/ 33" leads
023-217-00

D35, #10L 545 and Other Hub Group



2300 - 3500 LBS. CAPACITY



Grease Lube Parts

Item	Part No.	Description
1	010-004-00	Grease Seal
1A	010-019-00	Grease Seal for E-Z Lube®
2	031-033-02	L68149 Inner Bearing Cone
3	031-033-01	L68111 Inner Bearing Cup
4	031-031-01	L44610 Outer Bearing Cup
5	031-031-02	L44649 Outer Bearing Cone
6	006-176-00	Spindle Nut
7	019-002-00	Cotter Pin
8	021-003-00	Grease Cap
8A	021-041-01	Grease Cap for E-Z Lube®
8B	085-001-00	Rubber Plug for E-Z Lube®
9	005-023-00	Spindle Washer
28	006-191-00	Special Jam Nut for E-Z Lube® (after 2002)
29	006-190-00	Spindle Nut Retainer for E-Z Lube® (after 2002)

10" x 2 1/4" Brakes

Item	Part No.	Description
ns	K23-468-00/K23-469-00	LH/RH Electric Nev-R-Adjust®
20	K23-026-00/K23-027-00	LH/RH Electric
ns	K23-086-00/K23-087-00	LH/RH Electric w/park
ns	K23-312-00/K23-313-00	LH/RH Hydraulic Uni-servo
ns	K23-330-00/K23-331-00	LH/RH Hydraulic Uni-servo w/park
ns	K23-310-00/K23-311-00	LH/RH Hydraulic Duo-servo
ns	K23-400-00/K23-401-00	LH/RH Hydraulic Duo-servo w/park
ns	K23-344-00/K23-345-00	LH/RH Hydraulic Free Backing
ns	K23-344-01/K23-345-01	LH/RH Hydraulic FB Corrosion Resistant

ns - not shown

Note: Spindle is not available for resale.

Hubs

Item	Part No.	Description	Bolt Circle
Hubs and Drums			
24	008-247-05	1/2" Stud	5 on 4.50
24	008-249-07	1/2" Stud	5 on 5.00
24	008-249-05	1/2" Stud	5 on 5.50
24	008-247-12	1/2" Stud	5 on 4.75
26	008-250-05	1/2" Stud	6 on 5.50
Plain Hubs			
25	008-248-05	1/2" Stud	5 on 4.50
25	008-248-10	1/2" Stud	5 on 4.75
25	008-256-07	1/2" Stud	5 on 5.00
25	008-256-05	1/2" Stud	5 on 5.50
27	008-251-05	1/2" Stud	6 on 5.50

Studs & Wheel Nuts

Item	Part No.	Description
10	007-122-00	1/2-20 Pressed Wheel Stud
13	006-080-00	1/2-20 60° Cone Nut